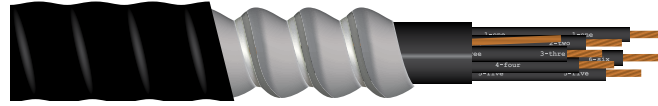


12 AWG MULTI-CONDUCTOR TECK 90 (XLPE) -40°C 600V



Product Code	No. of Cond.	Bonding AWG (Bare Copper)	Insulation Thickness		Inner Jacket Thickness		Inner Jacket Diameter		Armour Diameter		Outer Jacket Diameter		Weight Aluminum (Armoured)	
			Inches	mm	Inches	mm	Inches	mm	Inches	mm	Inches	mm	lbs/mft	kg/km
19A1202	2	12	0.0012	0.03	0.0018	0.045	0.405	10.16	0.636	14.73	0.724	17.27	238	320
19A1203	3	12	0.0012	0.03	0.0018	0.045	0.429	10.9	0.66	15.49	0.745	17.78	280	370
19A1204	4	12	0.0012	0.03	0.0018	0.045	0.502	12.75	0.733	16.62	0.817	18.8	298	426
19A1205	5	12	0.0012	0.03	0.0018	0.045	0.522	13.26	0.752	19.1	0.839	21.31	347	516
19A1206	6	12	0.0012	0.03	0.0024	0.06	0.599	15.21	0.828	21.03	0.912	23.16	402	598
19A1207	7	12	0.0012	0.03	0.0024	0.06	0.614	15.6	0.843	21.41	0.927	23.55	438	652
19A1208	8	12	0.0012	0.03	0.0024	0.06	0.656	16.66	0.884	22.45	0.97	24.66	476	708
19A1210	10	12	0.0012	0.03	0.0024	0.06	0.744	18.9	0.988	25.1	1.077	27.35	531	790
19A1212	12	12	0.0012	0.03	0.0024	0.06	0.776	19.71	1.037	26.34	1.125	28.57	651	969
19A1215	15	12	0.0012	0.03	0.0024	0.06	0.842	21.39	1.101	27.97	1.189	30.2	755	1123
19A1220	20	12	0.0012	0.03	0.0032	0.08	0.974	24.74	1.233	31.32	1.321	33.55	973	1448
19A1225	25	12	0.0012	0.03	0.0032	0.08	1.093	27.76	1.348	34.24	1.436	36.47	1165	1733
19A1230	30	12	0.0012	0.03	0.0032	0.08	1.167	29.64	1.421	36.09	1.509	38.32	1302	1938
19A1240	40	12	0.0012	0.03	0.0032	0.08	1.367	34.72	1.642	41.71	1.737	44.12	1593	2370
19A1250	50	12	0.0012	0.03	0.0032	0.08	1.483	37.67	1.758	44.65	1.853	47.06	1884	2804