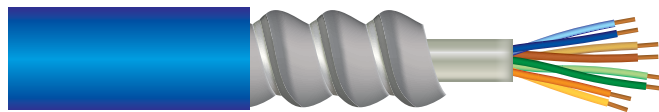


## CATEGORY 5E ALUMINUM ARMoured

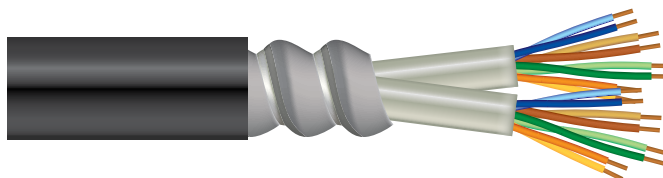
<b>Insulation Colours</b>	Pair 1: ColorTip Light Blue, Blue	Pair 2: ColorTip Light Orange, Orange
	Pair 3: ColorTip Light Green, Green	Pair 4: ColorTip Light Brown, Brown
<b>Jacket</b>	Inner and outer PVC jacket	
<b>Armour</b>	Aluminum Interlocked Armour	
<b>Temperature</b>	-40°C to 75°C	
<b>Approvals</b>	CM, UL444 CMG, HL RoHS Compliant Category 5e – TIA 568.C.2	
<b>Applications</b>	Industrial ethernet cable, harsh environments, 350MHz enhanced Category 5e, Gigabit Ethernet, 100 Base TX, flexible applications, armoured for extra protection Sunlight and oil resistant	



Product Code	AWG	Pairs	Strand & Cond.	Insul. Mat'l. & Dia. (in.)	Nom. OD (in)	Nom. Vel. of Prop.	Nom. Cap. (pF/ft)	Rating	Cable Weight (lbs/mft)	Jacket Colours
37UA2404H	24	4	Bonded Pairs Solid BC	PO 0.035	0.530	70%	15.0	CSA/FT4	102	Black or Blue

## DUAL CATEGORY 5E ALUMINUM ARMoured

<b>Insulation Colours</b>	Pair 1: ColorTip Light Blue, Blue	Pair 2: ColorTip Light Orange, Orange
	Pair 3: ColorTip Light Green, Green	Pair 4: ColorTip Light Brown, Brown
<b>Jacket</b>	Inner and outer PVC jacket	
<b>Armour</b>	Aluminum Interlocked Armour	
<b>Temperature</b>	-40°C to 75°C	
<b>Approvals</b>	CEC C(UL) Type CM TIA/EIA 568.B.2 CAT 5e Datatwist 350 spec	
<b>Applications</b>	100 Base TX, 100 Base VG ANYLAN, and 155 ATM, use in high bandwidth existing or future applications such as 622 ATM and gigabit ethernet Sunlight and oil resistant	



Product Code	AWG	Pairs	Strand & Cond.	Insul. Mat'l. & Dia. (in.)	Nom. OD (in)	Nom. Vel. of Prop.	Nom. Cap. (pF/ft)	Rating	Cable Weight (lbs/mft)	Jacket Colours
36121702A	24	4 (x 2)	Solid BC	PO	0.610	70%	14.0	CSA/FT4	124	Black or Blue