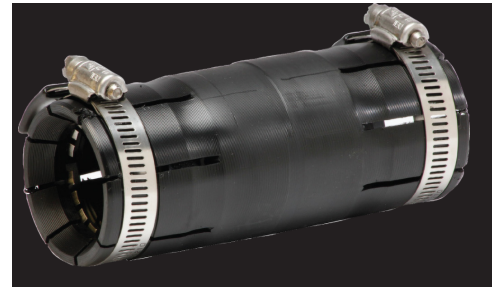


# STANDARD ACCESSORIES

## SHUR-LOCK II COUPLER



- Designed for coupling HDPE & PVC conduit
- Can also be used to couple dissimilar conduits such as HDPE to PVC, threaded or
- ~~1/2" - 1 1/2"~~
- ~~1/2" - 1 1/2"~~
- ~~1/2" - 1 1/2"~~
- One person installation; re-enterable, no special tools required
- Air and water tight
- No I.D. reduction
- ~~1/2" - 1 1/2"~~
- ~~1/2" - 1 1/2"~~
- ~~1/2" - 1 1/2"~~
- ~~1/2" - 1 1/2"~~
- ~~1/2" - 1 1/2"~~
- NOTE: Certain sizes ETL-Listed for use with HDPE and PVC for underground and concrete
- ~~1/2" - 1 1/2"~~
- ~~1/2" - 1 1/2"~~

DESCRIPTION	NOMINAL PULL-OUT STRENGTH (LBS)	PACKAGING	SHIP WEIGHT (LBS)/CTN	PART #
	ETL 5	5	8	10
	ETL 6	5	8	10
	6	5	8	10
	ETL 8	5	8	10
	ETL 8	5	8	10
	8	5	8	10

Please specify if ETL listing is required  
Intertek



DESCRIPTION		NOMINAL PULL-OUT STRENGTH (LBS)	PACKAGING	SHIP WEIGHT (LBS)/CTN	PART #
2.50" Shur-Lock II Coupler SDR 2.875" ± 0.020"		1,000	6/ctn	7.7	20000172
3.00" Shur-Lock II Coupler SDR 3.500" ± 0.020"		1,000	6/ctn	9.8	20000173
4.00" Shur-Lock II Coupler SDR 4.500" ± 0.020"		1,000	4/ctn	10.7	20000245
5.00" Shur-Lock II Coupler SDR 5.563" ± 0.020"		1,000	2/ctn	8.3	20000254
6.00" Shur-Lock II Coupler SDR 6.625" ± 0.020"		1,000	2/ctn	9.9	20000256

### SHUR-LOCK II COUPLER W/NO CENTER STOP

Center stop is removed to allow the coupler to be pulled back over the end of the duct for limited clearance installations.

1.00" Shur-Lock II Coupler SDR 1.315" ± 0.020"		600	10/ctn	4.5	20002340
1.25" Shur-Lock II Coupler SDR 1.660" ± 0.020"		700	10/ctn	5.1	20000236
1.50" Shur-Lock II Coupler SDR 1.900" ± 0.020"		800	10/ctn	5.7	20002341
2.00" Shur-Lock II Coupler SDR 2.375" ± 0.020"		800	10/ctn	6.7	20000237
2.50" Shur-Lock II Coupler SDR 2.875" ± 0.020"		1,000	6/ctn	7.6	20000238
3.00" Shur-Lock II Coupler SDR 3.500" ± 0.020"		1,000	6/ctn	9.7	20000239
4.00" Shur-Lock II Coupler SDR 4.500" ± 0.020"		1,000	4/ctn	10.6	20000260
5.00" Shur-Lock II Coupler SDR 5.563" ± 0.020"		1,000	2/ctn	8.1	20001531
6.00" Shur-Lock II Coupler SDR 6.625" ± 0.020"		1,000	2/ctn	9.6	20000261



Please specify if ETL listing is required

### RECOMMENDED ACCESSORY: PALM RATCHET

Used with Shur-Lock II and Split-Lock couplers.

DESCRIPTION	PACKAGING	SHIP WEIGHT (LBS)	PART #
Palm Ratchet with 5/16" and 7/16" Sockets.	each	1	20002747

