

1 Conductor Teck 90 (XLPE) 1KV

Conductor 8 AWG. thru 1000 kcmil. bare copper compact Class "B" strand

Armour Aluminum interlocked armour

Insulation Cross-linked Polyethylene (XLPE) Type RW90

Temperature -40°C to +90°C

Voltage 1000V

Inner Jacket Polyvinyl Chloride (PVC), black

Outer Jacket Low acid gas, flame-retardant, moisture and sunlight resistant Polyvinyl Chloride (PVC), black

Applications Can be directly buried, installed in raceways, including cable tray in wet or dry environments. Cable is suitable for use in outdoor exposed applications and is rated for damp or dry locations in -40°C (-40°F) environments.

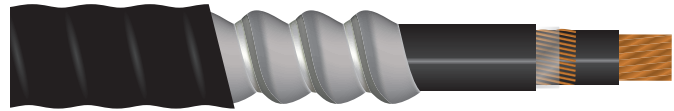
Approvals Industry compliances: CSA Standard C22.2 No. 131, No.38 and No.2256

RoHS Flame test compliances: CSA FT4 Hazardous Location

SUN RES (outer jacket) SUN RES on inner jacket and insulated conductor available upon request

Direct Burial Acid Gas: CSA AG14

Colour Coding Black



Product Code	AWG Size	Bonding AWG (bare copper)	Insulation Thickness		Appropriate Diameters				Outer Covering		Weight Aluminum (Armoured)	
			Inches	mm	Inner Jacket		Armour		Inches	mm	lbs/mft	kg/km
					Inches	mm	Inches	mm	Inches	mm		
19C01	1/0	4	0.080	2.03	0.530	13.50	0.910	23.2	1.000	25.40	760	1130
19C001	2/0	4	.080	2.03	0.750	19.05	1.025	26.04	1.135	28.83	944	1405
19C0001	3/0	3	.080	2.03	0.807	20.49	1.070	27.18	1.180	29.97	1121	1668
19C00001	4/0	3	.080	2.03	0.859	21.82	1.134	28.80	1.244	31.60	1272	1893
19C2501	250	2	.090	2.29	0.955	24.25	1.247	31.67	1.355	34.42	1466	2181
19C3001	300	2	.090	2.29	1.005	25.53	1.280	32.51	1.409	35.79	1715	2552
19C3501	350	1	.090	2.29	1.080	27.43	1.353	34.37	1.465	37.21	1947	2897
19C4001	400	1	.090	2.29	1.123	28.53	1.398	35.51	1.527	38.79	2164	3220
19C5001	500	1/0	.090	2.29	1.237	31.42	1.514	38.46	1.625	41.28	2596	3863
19C6001	600	1/0	.090	2.29	1.278	32.47	1.553	39.45	1.682	42.72	2960	4405
19C7501	750	2/0	.090	2.29	1.408	35.75	1.683	42.75	1.812	46.02	3648	5429
19C10001	1000	2/0	.090	2.29	1.561	39.64	1.911	48.53	2.045	51.94	4674	6955

Single conductor comes with concentric bonding conductor, and is only available with an aluminum armour. Steel armour is not permitted.

1C_T90_1KV.pdf